

UNIVERSAL JOINT KITS

IDENTIFICATION OF UNIVERSAL JOINT KITS

DETERMINE KIT TYPE FROM ILLUSTRATIONS

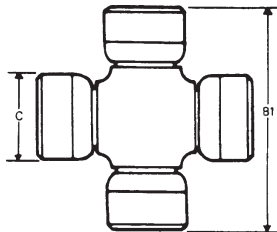


Fig.1

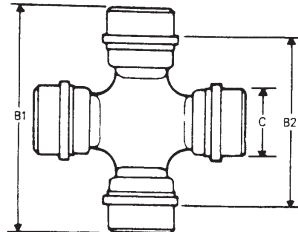


Fig.2

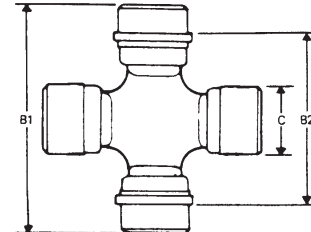


Fig.3

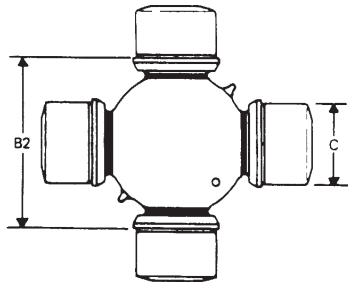


Fig.4

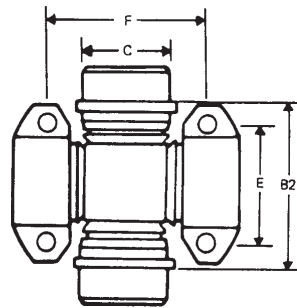


Fig.5

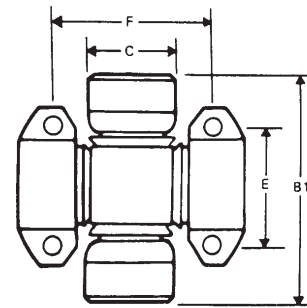


Fig.6

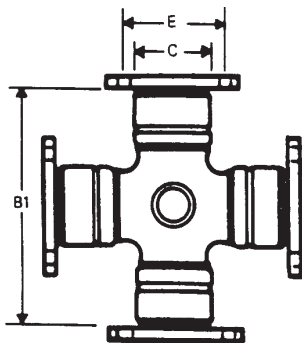


Fig.7

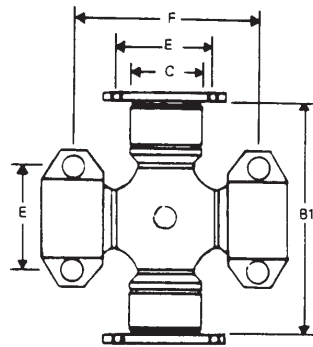


Fig.8

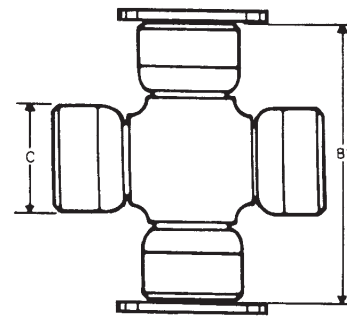


Fig.9

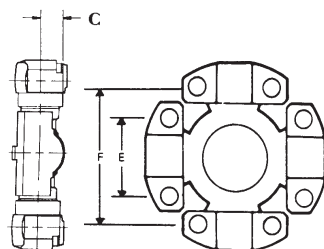


Fig.10

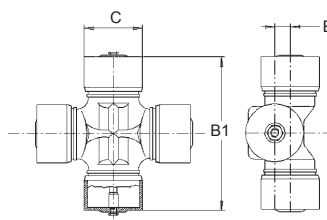


Fig.11

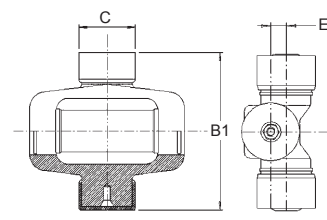
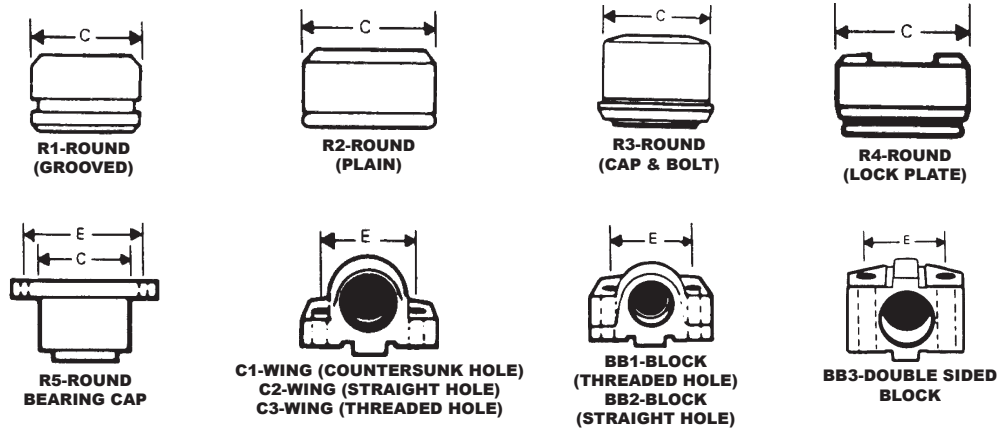


Fig.12

UNIVERSAL JOINT KITS

IDENTIFICATION OF BEARING TYPES & DIMENSIONS

BEARING TYPES & DIMENSIONS



HOW TO MEASURE UNIVERSAL JOINT KITS

Follow these simple steps:-

STEP ONE

DETERMINE KIT TYPE FROM ILLUSTRATIONS

STEP TWO

Figures 1-4

- A) Measure Bearing Cap Diameter Dimension 'C'
- B) Measure 'B1' and/or 'B2'
- C) Check Bearing Cap Type and quantity.

Figures 5-9

- A) Measure Bearing Cap Diameter Dimension 'C'
- B) Measure 'B1' or 'B2'
- C) Measure Dimensions 'E' and/or 'F'
- D) Check Bearing Cap Type and quantity.

Figure 10

- A) Measure Dimensions 'E' and 'F'
- B) Check Bearing Cap Type and quantity.

IMPORTANT

Measure with Bearing Caps compressed-ensure that Needle Rollers are not dislodged.

NOTES